



# Presby Environmental, Inc.

*The Next Generation of Wastewater Treatment Technology*

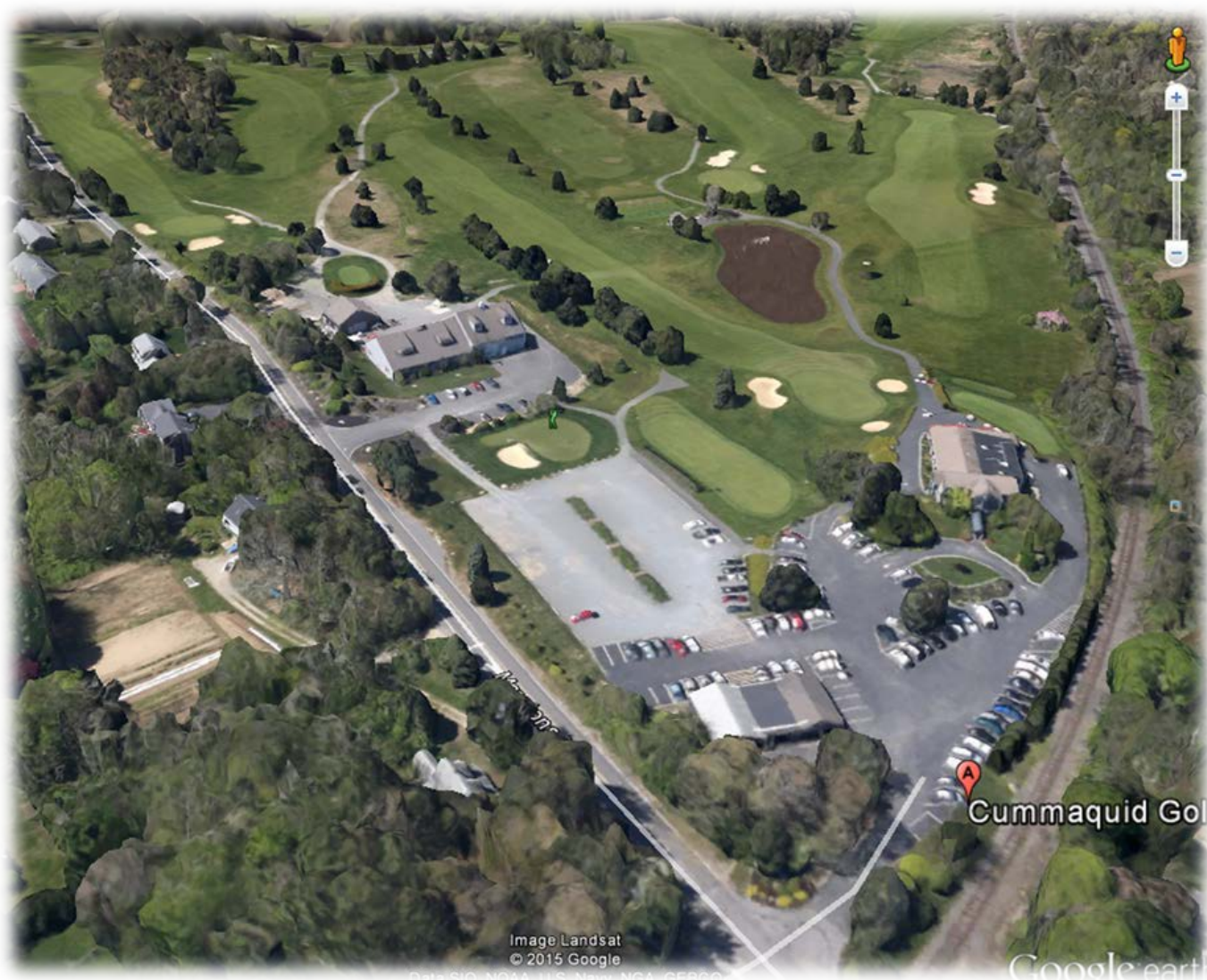
143 Airport Rd., Whitefield, NH 03598

Tel: 800-473-5298 Fax: 603-837-9864

info@presbyeco.com

www.PresbyEnvironmental.com

## Presby Wastewater Treatment System “Cummaquid Golf Club” 27,221 Litres/Day (7,191 GPD)



## (Cummaquid Golf Club)

**Project Name :** Cummaquid Golf Club – New Clubhouse

**Location :** Barnstable, MA

**Installation Date :** 2014

**Engineers (contact) :** Baxter Nye Engineering & Surveying

78 North Street 3<sup>rd</sup> Floor

Hyannis, MA

(508) 771-7502

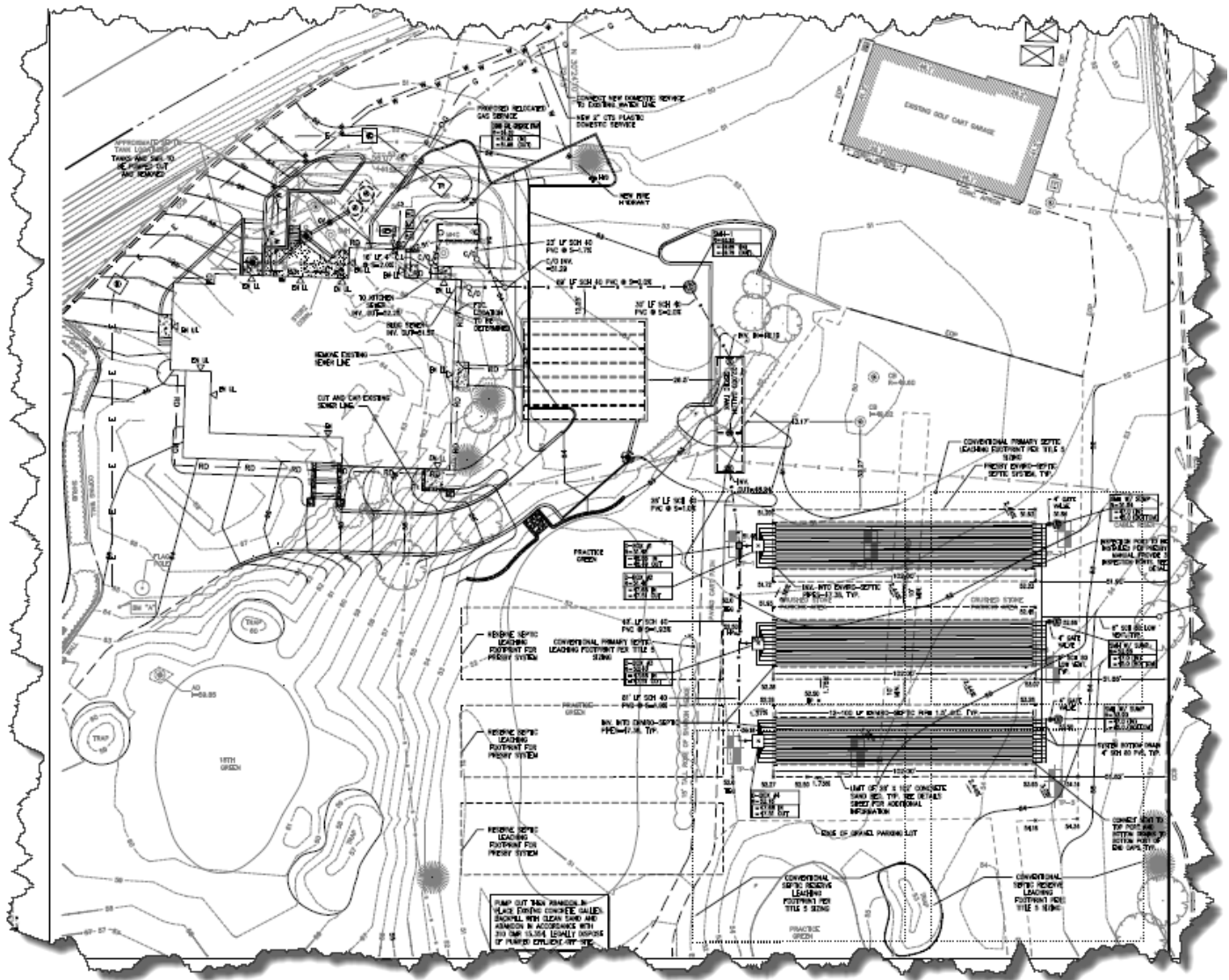
**Design criteria :** 176 seat dining room

266 lockers

Office & retail space

Total design flow (Q): 27,221 Litres/Day (7,191 GPD)

Total amount of Enviro-Septic Pipe : 1,098 meters (3,600 FT)







# Presby Environmental, Inc.

*The Next Generation of Wastewater Treatment Technology*

143 Airport Rd., Whitefield, NH 03598

Tel: 800-473-5298 Fax: 603-837-9864

info@presbyeco.com

www.PresbyEnvironmental.com

## Presby Wastewater Treatment System

System "Southwick's Zoo"

33,596 Litres/Day (8,875 GPD)



## Mendon Zoo / Southwick's Zoo

**Project Name :** Mendon Zoo / Southwick's

**Zoo Location :** Mendon, MA

**Engineers (contact) :** Andrews Surveying & Engineering, Inc.

104 Mendon, Street

Uxbridge, MA

(508) 278-3897

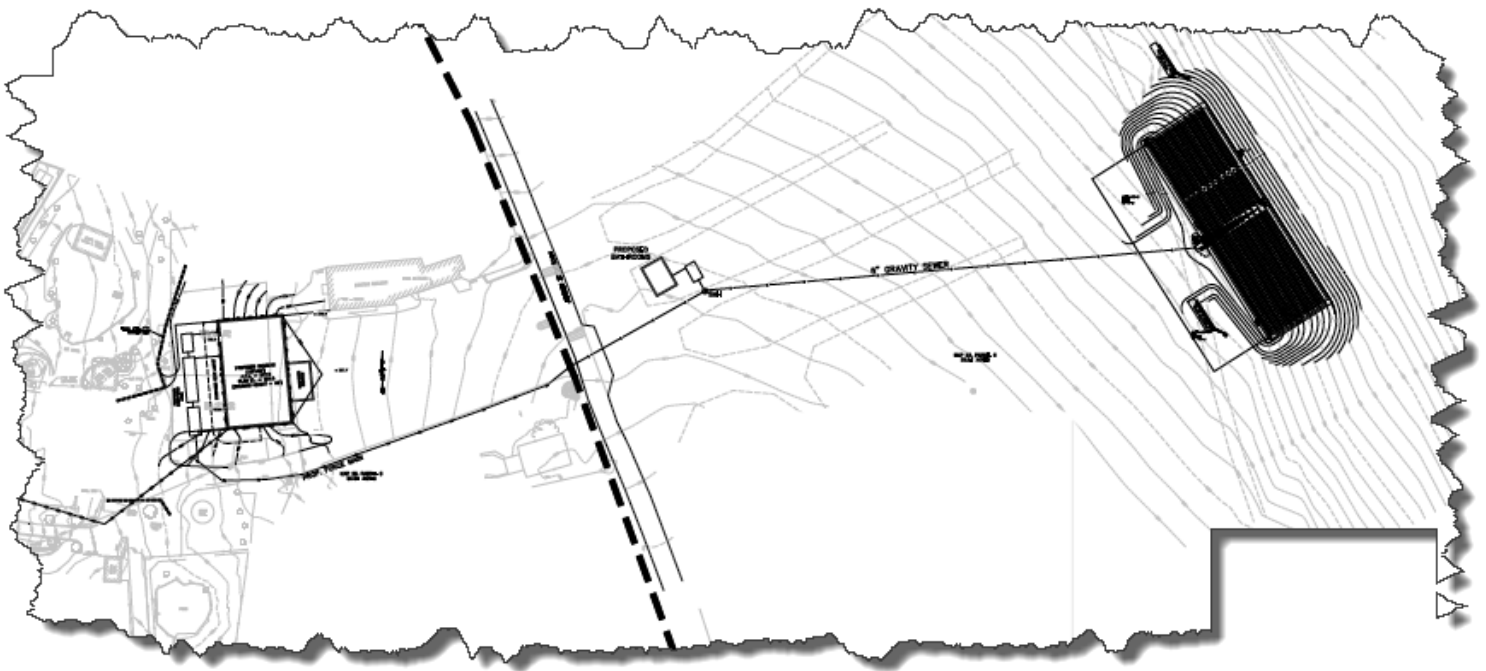
**Design criteria :** 125 Seat fast food restaurant

125 Seat sit down restaurant

Patron bathrooms

Total design flow : 33,596 Litres/Day (8,875 GPD)

Total amount of Enviro-Septic Pipe : 2012 meters (6,600 FT)







# Presby Environmental, Inc.

*The Next Generation of Wastewater Treatment Technology*

143 Airport Rd., Whitefield, NH 03598  
Tel: 800-473-5298 Fax: 603-837-9864  
info@presbyeeco.com  
www.PresbyEnvironmental.com

## Presby Wastewater Treatment System “Cottages at River Hill” 34,978 Litres/Day (9,240 GPD)



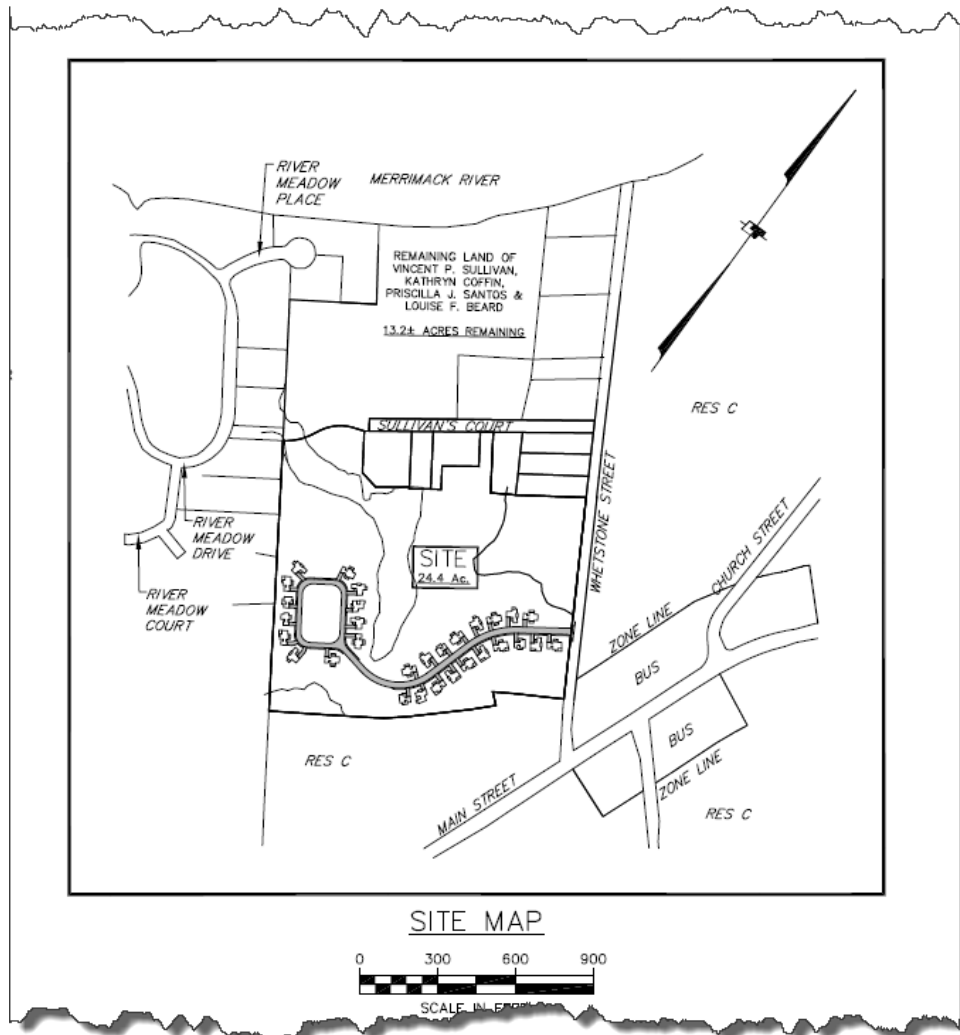
**Project Name :** Cottages at River Hill

**Location :** West Newbury, MA

**Installation Date :** 2014

**Engineers (contact) :** Landtech Consultants  
515 Groton Road  
Westford, MA  
(978) 692-6100

**Design criteria :** 30 Unit Single family dwelling development  
Total bedrooms : 84 Bedrooms  
Total design flow : 34,978 Litres/Day (9, 240 GPD)  
Total amount of Enviro-Septic Pipe : 1,831 meters (6,006 FT)





# Jackson, Wyoming

*This is a large commercial system designed for a daily flow of 25,741 Litres/Day (6800 GPD). The field is divided into 4 beds fed from 2 D-boxes.*



- 4 Beds, 260.5 meters (855 FT) of pipe in each
- 1.5 meters (5 FT) below parking lot
- 9 rows, 29 meters (95 FT) long in each bed



*Jackson, WY Motel 2013*



*Excavating failed system*

# Devil's Tower National Park



- Gravity flow system rated at 7,571 Litres/Day (2,000 GPD) with 304.8 meters (1,000 ft.) of AES buried at around 2 meters (6 to 7 ft.)
- Gravity flow system was rated at 3,786 Litres/Day (1,000 gpd) with 152.4 meters (500 ft.) of AES buried at around 1.5 meters (4 to 5 ft).
- Lift station dosed and rated at roughly 2,650 Litres/Day (700 gpd).

*AES systems installed in three separate campgrounds within the National Park during Fall, 2012. The relatively deep installations were driven by long runs from the existing restroom facilities to the new drainfields.*



# Lincoln, Montana – Meat Packing Plant



*Beef Jerky Production Plant  
Presby AES Replaces 3<sup>rd</sup> Failed System  
Installed Within Original Pipe & Stone Footprint*



# Blodgett Landing Treatment Plant

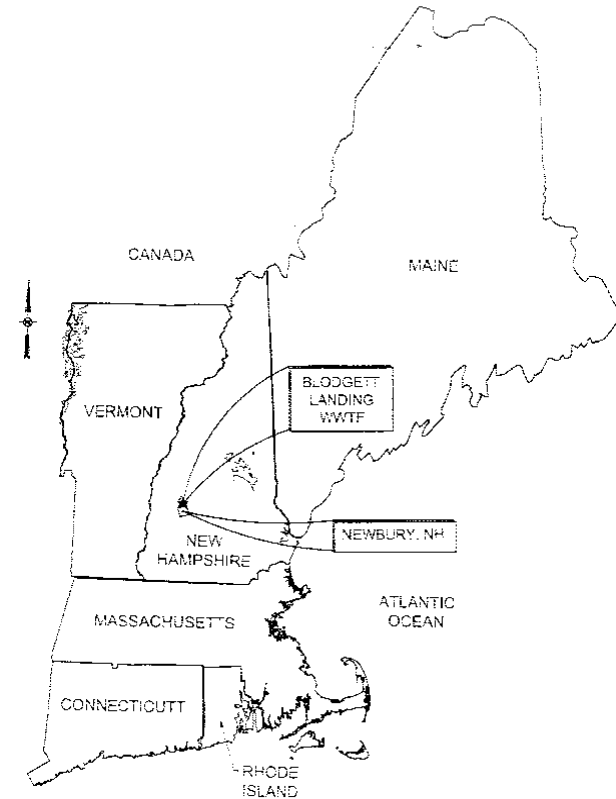
- **Location:** Newbury, NH
- **Design Flow:** 189,271 Litres/Day (50,000 GPD)
- **Peak Daily flow:** 333,117 Litres/Day (88,000 GPD)
- **Process:** Passive Treatment with De-nitrification

## Residential Wastewater

Biological Oxygen Demand - 5 day consumption (BOD <sub>5</sub> )	300 mg/L
Total Suspended Solids (TSS)	343 mg/L
Potential Hydrogen (pH)	6.8 (measured)
Total Nitrogen	55 mg/L
Total Phosphorous	8 mg/L

## Treatment Requirements

Biological Oxygen Demand - 5 day consumption (BOD <sub>5</sub> )	Less than 30 mg/L
Total Suspended Solids (TSS)	Less than 30 mg/L
Nitrates	Less than 10 mg/L
Phosphorus	Less than 4 mg/L



NEWBURY WWTF  
FIGURE 1-1

LOCATION MAP  
NOT TO SCALE



# Blodgett Landing Treatment Plant

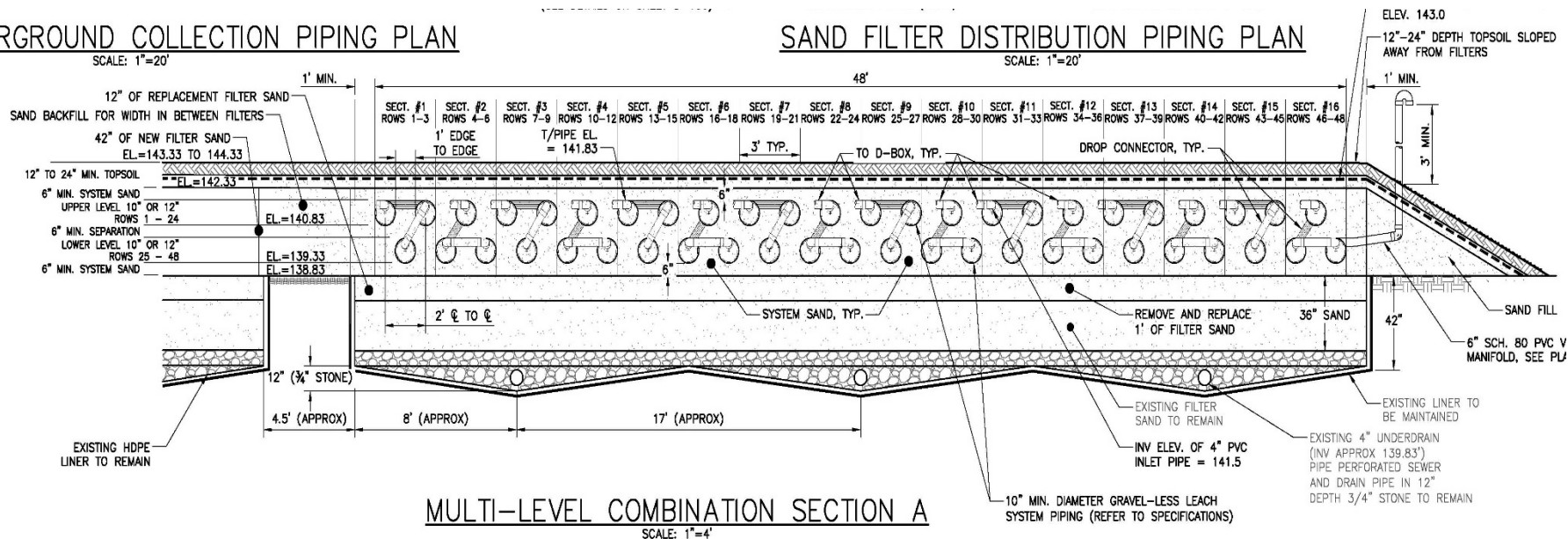
- 4 Enviro-Septic® treatment beds 27.5 m x 15.25 m (90' x 50')
- Patented Multi-Level configuration contains 1,250 meters (4,100 FT) of pipe per bed, totaling 5,000 meters (16,400 FT)

UNDERGROUND COLLECTION PIPING PLAN

SCALE: 1"=20'

SAND FILTER DISTRIBUTION PIPING PLAN

SCALE: 1"=20'





# Blodgett Landing Treatment Plant

